



The Navigation Inn

Kilby Bridge - Wigston - Leicestershire



CHILDREN'S MENU

2 Courses £6.95
Any main meal plus two sides.

MAINS

Fish Fingers

Two crispy breaded fish fingers.

Beef Burger

A beef burger served with lettuce and tomato in a bun.

Vegi Burger (v)

A bean burger in a parsley breadcrumb coating.

Chicken Goujons

Two homemade breaded chicken goujons.

Mini Sausages

Mini pork sausages with optional gravy.

Mini Fish

A cod fillet hand-battered served with a lemon wedge.

Scampi

Whole tails of breaded Whitby scampi.

Vegetarian Sausages (v)

Vegetarian sausages served with optional onion gravy.

SIDE 1

Chips

New Potatoes

Mashed Potato

Garlic Bread

SIDE 2

Salad

Baked Beans

Garden Peas

Mushy Peas

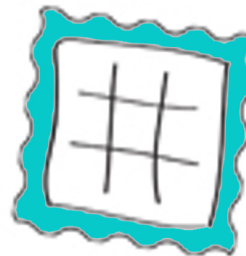
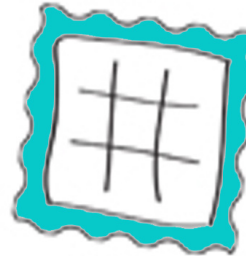
DESSERT

Ice Cream

Chocolate, Vanilla or Strawberry ice cream.

Full Dessert + £2

Any choice of dessert from the blackboard.



SUNDAY MENU

1 Course £5.95 | 2 Courses £6.95 | 3 Courses £7.95

STARTERS

Garlic Bread (v)

Two slices of garlic bread.

Soup (v)

Served with your choice of white or brown bread.

MAINS

Children's Roast (v option)

A smaller portion of our full Sunday roast.

Fish Fingers or Chicken Goujons

Served with chips and baked beans or peas.

DESSERTS

Ice Cream

Chocolate, Vanilla or Strawberry ice cream.

Full Dessert + £2

Any choice of dessert from the blackboard.

DRINKS

Fruit Shoot

Blackcurrant

Fruit Juice

Orange Juice

Draught Drinks

Pepsi, Diet Pepsi, Lemonade

Cordials

Blackcurrant, Lime, Orange

Cans

Coke, Diet Coke, Vimto, Fanta Lemon, Fanta Orange, Appletiser

J20

Apple & Mango, Orange & Passionfruit, Apple & Raspberry

